

**AZAAN INTERNATIONAL SCHOOL**

**Worksheet (2025-2026)**

**GRADE-V**

**SUB: Science**

**Ch-1: Plant reproduction.**

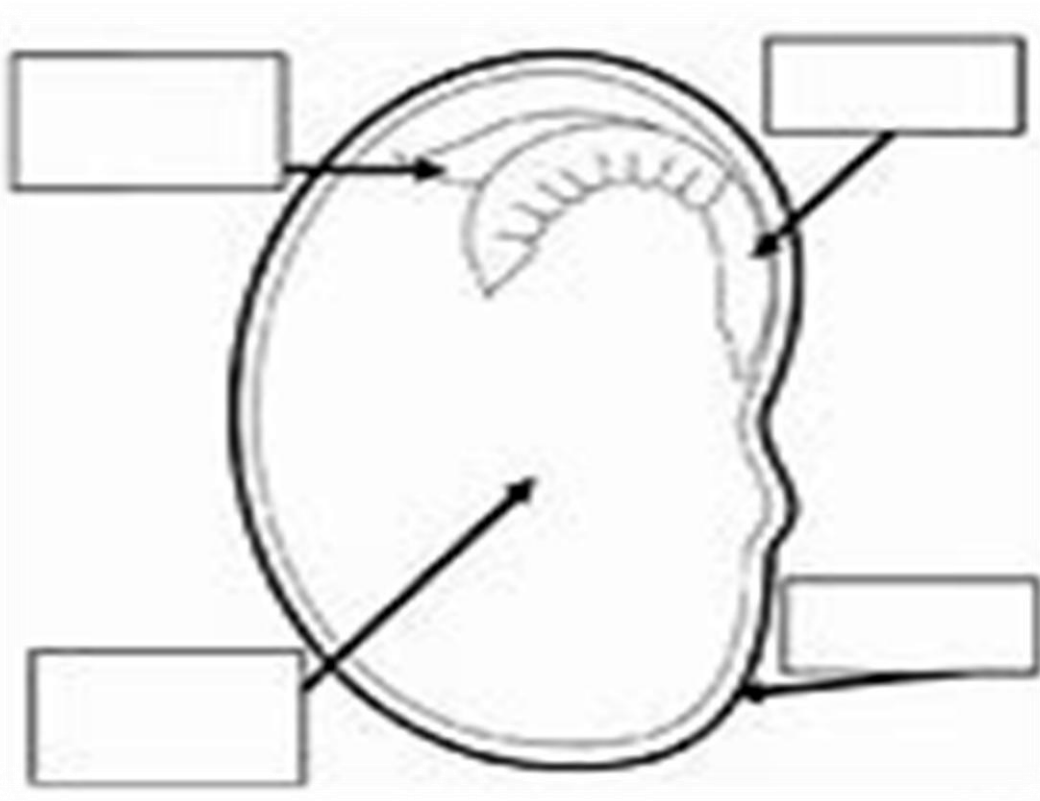
**Ch-3: Food Health and Hygiene.**

**Name:** \_\_\_\_\_ **Date:** \_\_\_\_\_ **Section:** \_\_\_\_\_

**Roll No.** \_\_\_\_\_ **Sign.** \_\_\_\_\_

---

**I. Label the Parts of a seed given below diagram of Seed.**



**II. Answer in one word.**

1. A seed that has grown into a young plant is called a \_\_\_\_\_.
2. Growing new plants from roots stems or leaves is known as \_\_\_\_\_.
3. Diseases caused due to lack of essential nutrients in sufficient amounts in our diet are called \_\_\_\_\_.
4. Chemical used to destroy germs \_\_\_\_\_.

5. Conditions when there is excessive weight gain due to too much fat in our body \_\_\_\_\_.

**III. Give example of food items for each of the food group given below.**

1. Cereal group: \_\_\_\_\_.
2. Fruit and Vegetable: \_\_\_\_\_.
3. Milk group: \_\_\_\_\_.
4. Protein group: \_\_\_\_\_.
5. Fats group: \_\_\_\_\_.

**IV. Sort the following diseases into communicable and non-communicable diseases.**

1. Obesity, Typhoid, Jaundice, Scurvy, Beriberi, Allergy, Common Cold.
2. Chicken pox, malaria, Goiters, Measles, rickets, diabetes, Arthritis.

Communicable	Non-Communicable

-----END-----

# Azaan International School

## A-2 Worksheet 2025-26 lesson 7- Minerals and rocks lesson 8 -Soil and and its important lesson 12: Natural disasters

Grade: 5

Subject: Science

Name: \_\_\_\_\_ Roll No: \_\_\_\_\_ Sec : \_\_\_\_\_ Date: \_\_\_\_\_

---

### I. Fill in the blanks.

1. \_\_\_\_\_ are natural events that cause great damage to life and property.
2. An \_\_\_\_\_ is caused by the movement of plates in the earth's crust .
3. \_\_\_\_\_ is a long period of very little or no rainfall .
4. The rocks that are rich in valuable minerals are called \_\_\_\_\_
5. Minerals found in the form of crystals, can be cut and polished into beautiful stones called \_\_\_\_\_.
6. \_\_\_\_\_ is a metal used to make machine parts and electrical wires.
7. Planting trees on vacant lands to prevent soil erosion is called \_\_\_\_\_
8. \_\_\_\_\_ is a porous, igneous rock formed when frothy lava cools quickly on the surface of the earth

### II. Match the following.

- |                    |                         |
|--------------------|-------------------------|
| 1. fossil fuel     | a. shortage of food ( ) |
| 2. famine          | b. humus ( )            |
| 3. terrace farming | c. petroleum ( )        |
| 4. topsoil         | d. molten rock ( )      |
| 5. earthquake      | e. Richter's scale ( )  |
| 6. magma           | f. mountains ( )        |

### III. Tick the correct word in the bracket.

1. Granite consists of minerals called (mica/ calcite) .
2. Petroleum is obtained from deep inside the Earth by (mining/drilling)
3. .(Embankments/shelter belts ) built along the rivers prevent soil erosion on the river banks.
4. A (seismograph/anemometer) is used to measure the intensity of an earthquake.
5. (Tsunamis/ landslides )are caused by underwater disturbances.
6. Plants grow well in (sandy soil /loamy soil).

### IV. Answer in one word.

1. Valuable chemical substances that are formed naturally in the ground. \_\_\_\_\_
- 2.The outermost rocky layer of the earth where rocks are found. \_\_\_\_\_
- 3.Natural process by which rocks break down into smaller pieces.  
\_\_\_\_\_
- 4.The line of plants that are grown to protect fields from the action of wind.  
\_\_\_\_\_
- 5.A series of giant winds that form in oceans and seas due to underwater disturbances.  
\_\_\_\_\_
6. Point inside the earth where the earthquake begins. \_\_\_\_\_

### V. Label the rock cycle and fill in the blanks.



1. The lava cools quickly on the earth's surface and turns into solid \_\_\_\_\_ rocks.
2. The sediments are deposited in layers and overtime they change into \_\_\_\_\_ rocks.
3. \_\_\_\_\_ rocks are rich in fossils.
4. The intense heat and pressure inside the earth's crust changes the rocks into more harder rocks called \_\_\_\_\_.

\*\*\*\*\*END\*\*\*\*\*

# AZAAN INTERNATIONAL SCHOOL

## Worksheet-3 (2025-26)

Grade-V

Subject-Science

Name: \_\_\_\_\_ Roll: no \_\_\_\_\_ Sec: \_\_\_\_\_

---

### 9. Air and Water.

### 13. Earth's Satellites.

#### I. Fill in the blanks.

1. \_\_\_\_\_ is an object that revolves around a planet.
2. The moon's gravity is \_\_\_\_\_ of the gravity of the earth.
3. Sound cannot be heard on the moon, as the moon does not have any \_\_\_\_\_.
4. \_\_\_\_\_ satellites are used to transmit telephone messages, radio and television signals.
5. When the whole moon is under the umbra it is called \_\_\_\_\_.
6. The pressure exerted by the air around us is called \_\_\_\_\_.
7. The process of purifying a liquid that involves evaporation and condensation is called \_\_\_\_\_.
8. The \_\_\_\_\_ gas in the atmosphere helps to keep fires under control.
10. \_\_\_\_\_ is the process of removing insoluble substances from water by allowing the water to flow through a filter.

#### II. Write 'T' for true and 'F' for false. Correct the false statements.

1. The large amount of oxygen in air helps to keep fires under control.
- 

2. Sedimentation and decantation remove chalk powder from water.
- 

3. Boiling water for 10-15 minutes is an effective method to kill germs.

---

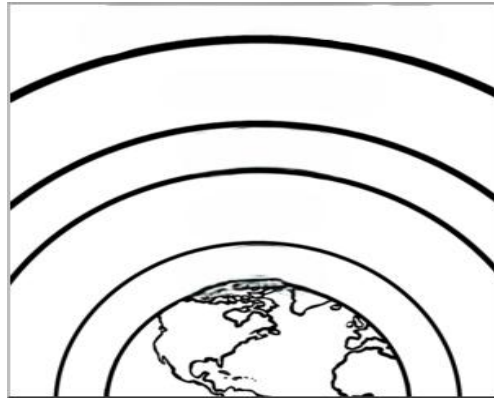
4.The thermosphere is the coldest part of the atmosphere.

---

5. In a salt solution, water is the solute and salt is the solvent.

---

**III. a. Name the layers of the Earth's atmosphere.**



**b. Match the following.**

Cloumn A

Column B

1.Troposphere

a. jet planes ( )

2.Straosphere

b. Meteors ( )

3.Mesosphere

c. space shuttles ( )

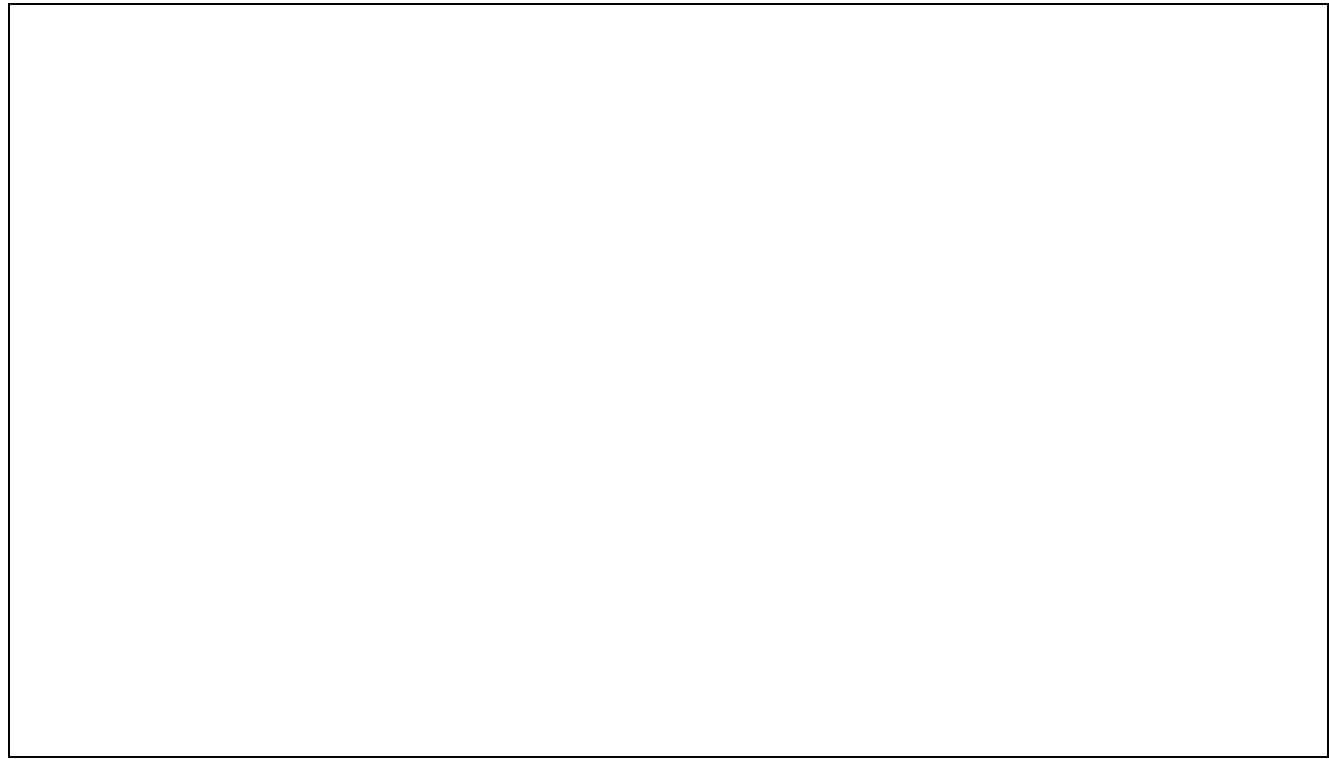
4.Thermosphere

d. Merges into space ( )

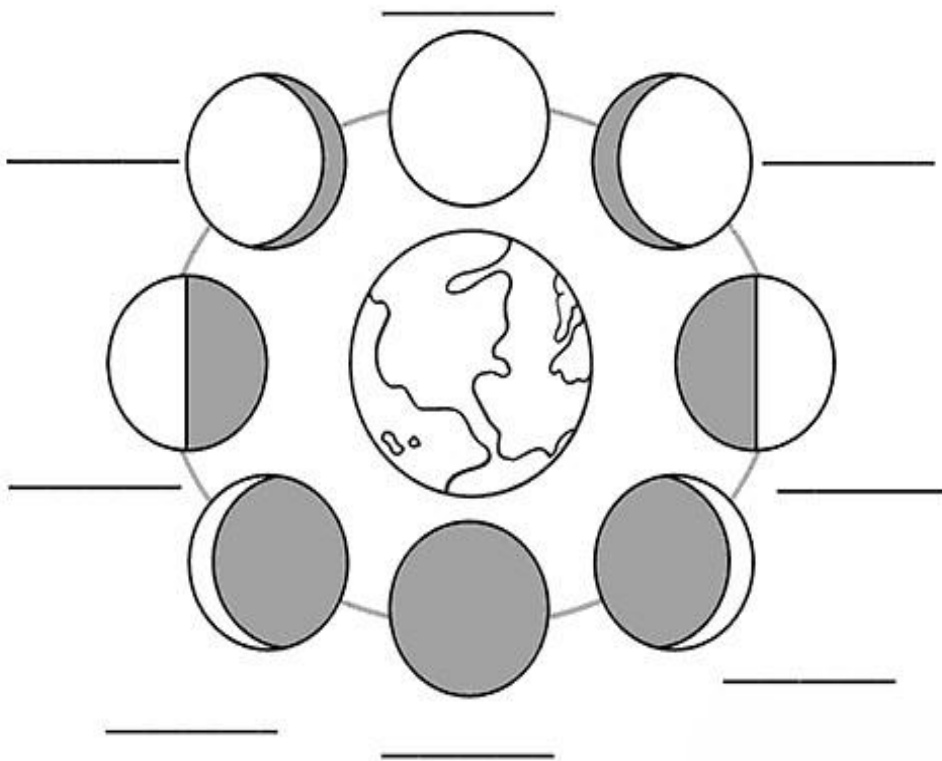
5. Exosphere

e. weather changes ( )

**IV. Draw a lunar eclipse in the space given below.**



V. Identify the phases of the moon.





1.The Moon does not have its own light. We only see the part of the moon that \_\_\_\_\_sunlight to us.

2.The different shapes of the moon as seen from the earth are called \_\_\_\_\_.

3.A complete cycle from one new moon to the next new moon takes about 295 days.

This is called a \_\_\_\_\_

4.During the days between the new moon and Full moon, the moon seems to grow.

We call this phase as \_\_\_\_\_ and during the days between the Full moon and new moon, the moon seems to become thinner. We call this phase as \_\_\_\_\_.

VI. Draw a diagram to show the process of distillation.



VII. Describe the moon and its features.

---

---

---

---

---

---

---

---

---

---

---

---

---